

# Historical Requirement Coverage Report

Shows a daily historical view of Requirements coverage. It is possible to see the evolution of the Requirement's coverage status over time for a particular **Analysis Version** (or **Test Plan**) and **Test Environment**.



## Please note

To use this report, your project must have the Requirement Coverage enabled. See how in [Configure JIRA project to be used as Requirements project](#).

- [Purpose](#)
- [How to use](#)
  - [Source data](#)
  - [Analysis](#)
- [Example](#)
- [Sharing the Report](#)

## Purpose

This report allows users to evaluate the progress of the requirement coverage status, which implicitly takes into account the testing results associated with each requirement.

## How to use

This report is either accessible from **Xray Reports** icon on the project left sidebar or from the standard **Reports** icon, which includes other kinds of reports besides Xray.

At the top of the report you'll find several areas related with the report and with the data shown in the report.

<b>A</b> Scope: version; Version: v3.0; Environment: All Environments ▾	<b>B</b> Component/s ▾	<b>C</b> Fix Version: v3.0 ▾	<b>D</b> From 2019-09-13 To 2019-09-17	<b>E</b> How to read this report ⓘ ⚙️
--	---------------------------	---------------------------------	---	---

- **A:** Analysis & Scope, for choosing how to analyze the entities
- **B:** Group by, for defining how to visually group/aggregate items
- **C:** Filter, for selecting the source data
- **D:** Data range
- **E:** Visualization information and options

You need to configure the source data (i.e., the requirements) for the chart and how to calculate the requirement status for each.

## Source data

Source "requirement" issues can be directly provided (within section C) using the requirement fields configured in the *Basic* tab or the JQL written in the *Advanced* tab.

By default, the *Basic* tab provides the following fields:

- **Fix Version:** Version assigned to requirements
- **Sprint (Only if Jira Software is installed):** Sprint assigned to requirements
- **Component:** Components assigned to requirements
- **Status:** The Issue's workflow status
- **Resolution:** The Issue's workflow resolution
- **Contains text:** Filter requirements by text

Fix Version: v3.0 Component: UI Status: Closed Resolution: Done

Basic

Advanced

More

Fix Version

v3.0 x

Sprint

Component

UI x

Status

Closed x

Resolution

Done x

Contains text


Clear

Apply

Cancel

By clicking on *More*, it's possible to manage which fields will be used to filter the requirements:

- Selecting fields will enable to filter further the requirements
- Unselecting fields will remove them from the search criteria

 The default fields cannot be removed from the dialog

☰

Fix Version: v3.0 Component: UI Status: Closed Resolution: Done ▾

Basic

Advanced

→ More ▾

Fix Version

v3.0 × ▾

Sprint

▾

Component

UI × ▾

Status

Closed × ▾

Resolution

Done × ▾

Contains text

Clear

Apply

Cancel

☰

Fix Version: v3.0 Component: UI Status: Closed Resolution: Done ▾

Basic

Advanced

Search

Q

☑ Assignee

More ▾

Fields

☐ % Limits

☐ Affects Version

☐ Age

☐ Comment

☐ Created Date

☐ Creator

☐ Date Time Field

Fix Version

v3.0 × ▾

Component

UI × ▾

Resolution

Done × ▾

Assignee

▾

Clear

Apply

Cancel

Alternatively to the *Basic*, the *Advanced* tab offers the possibility of filtering the requirements via JQL:

☰

Fix Version: v3.0 Component: UI Status: Closed Resolution: Done ▾

Basic

Advanced

More ▾

Fix Version

v3.0 ×

▾

Sprint

▾

Component

UI ×

▾

Status

Closed ×

▾

Resolution

Done ×

▾

Contains text

Clear

Apply

Cancel

☰

JQL: issuetype = Story ▾

! How to read this report

Basic

Advanced

✓ JQL Search

issuetype = Story

Clear

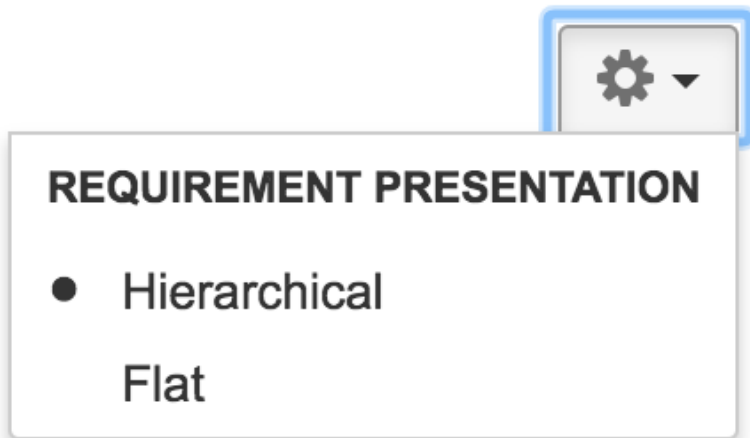
Apply

Cancel

If you wish, you can clear the filter in order to see all Requirements once again. You can do this by clicking on the *Clear* button and then press *Apply*.

There is also an options menu (within section E) where you can choose the visualization type for the report:

- **hierarchical** - only the parent requirement issues will be presented in the report, if the filter includes them. Sub-requirements can still be visualized in the overall details table.
- **flatten** - the requirement issues will not consider the parent/child relationship. All parent and child requirements will be considered and showed similarly in the report.



## Analysis

On the left side (within section A), it's possible to define the analysis strategy, i.e., the way you want to analyze the selected/filtered requirements. You can choose to analyze either by **Version** or **Test Plan**, and complement it with a **Test Environment**.

If you choose analysis by **Version**, then the latest results from Test Executions for the specified version are taken into account. If you choose **Test Plan**, only Test Executions (and related results) associated with the given Test Plan are considered in the calculation of the requirement status.

If the Test Environment is specified, then only the executions that ran in the specified environment are considered.

**Scope: version; Version: v1.1; Environment: All Environments** ▾

VERSION | TEST PLAN

Analysis & Scope

Fix Version

Environment

Apply

Clear

Cancel



### Tips

For more information, please see [Coverage Analysis](#) and [Understanding coverage and the calculation of Test and requirement statuses](#).

The user can also enter a time period (within section D) to analyze the daily coverage of requirements.



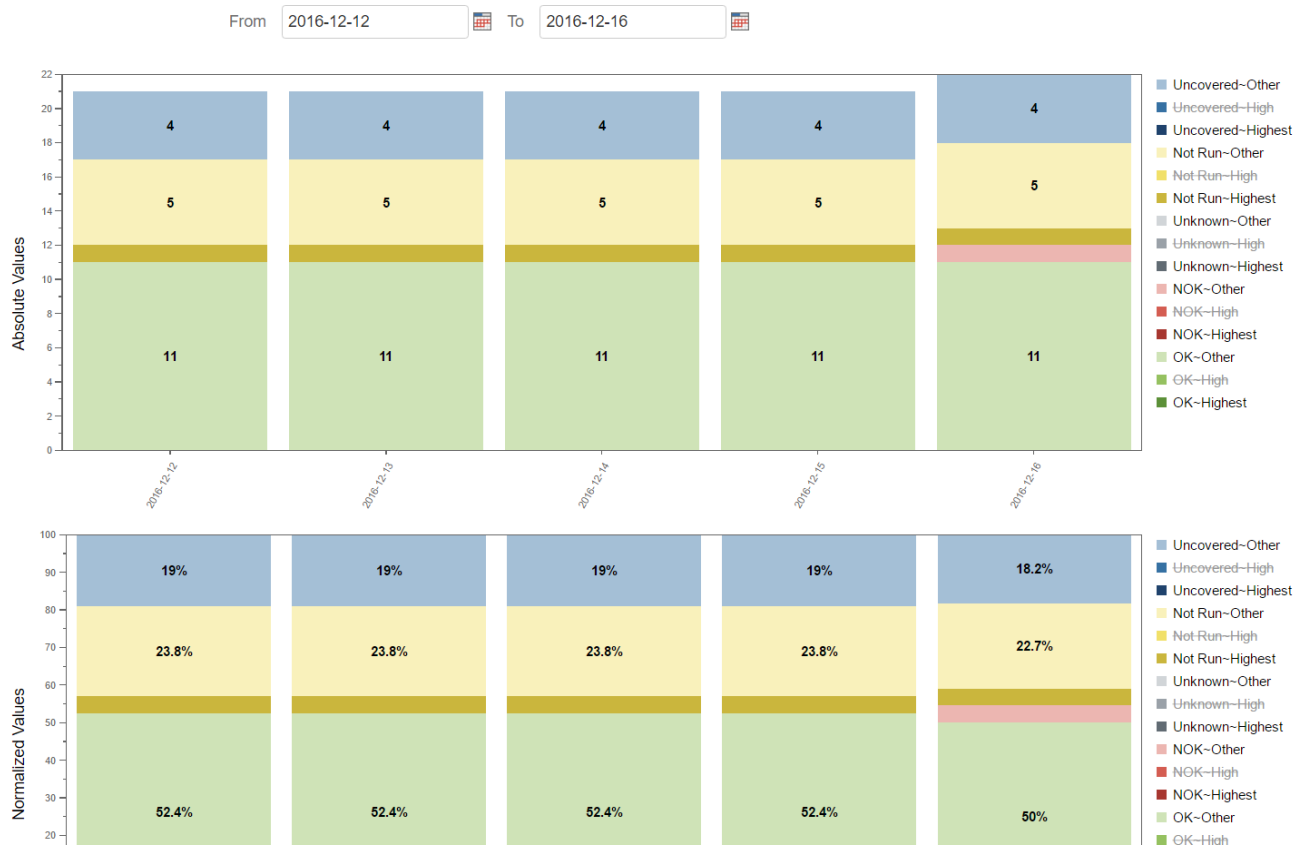
#### Please note

Some Xray global settings may affect the report (e.g. "Requirement Coverage Strategy", "Ignore Requirements with statuses", "Ignore Requirements with labels", "Ignore Tests with status")

## Example

This graphical report is composed of two similar vertical stacked bar charts: one showing absolute values and the other showing relative percentage normalized values. Both charts are interactive. Hovering over the different bars shows a small popup with information about the specific series (Status-Grouping, Date and Percentage/Value). You can deactivate a particular series by clicking in the series legend.

Each chart column shows the Requirement coverage status for a given day. Each status has a different color and is divided by Requirement Grouping with a gradient.



## Sharing the Report

The report can be shared by copying and sending the URL located in the browser's address bar.

When opening the report, the Analysis & Scope, Filter, Group by, Date range and Requirement Presentation options will be automatically populated with the values provided in the URL.