

[Xray Cloud] How to use REST API with Xray for Jira Cloud

With this article, you will find an example of all the steps that should be made when you want to use REST API for Xray Cloud. Please note:

- This is an example. You have several reports formats you can use and several endpoints for different actions.
- This article should be used to understand all the steps that have to be made when we want to use the REST API by using the Command-line interface.

Step-by-step guide

Note: This is an example

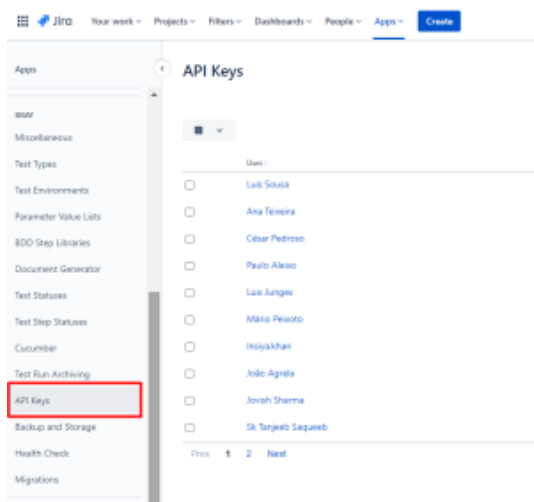
1 – Run your tests by using the TestNG framework, and get the TestNG XML report.

2 – Then, you can import your Execution results by using the REST API.

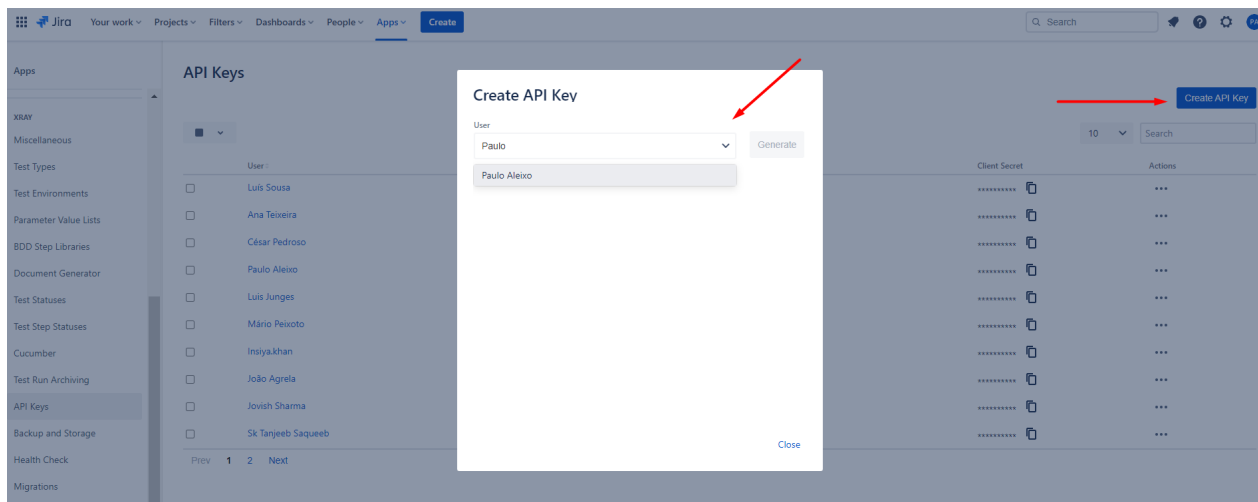
3 – First, you need to authenticate. Requests made to Xray's REST API must be authenticated based on an API Key.

3.1 - Define your API KEY

Go to Jira settings > Apps > Xray > API Keys



3.2 - Then Create API Key > Search for your user



3.3 - Click Generate

3.4 - Now you have two informations: Client ID and Client Secret

