

# Importing tests from HP ALM/QC


Xray v3.0 has a [basic](#) built-in tests importer for HP ALM/QC v12.5x.

You can import test cases from HP ALM's "Test Plan" (not in any way related with Xray's Test Plan issue) by using HP ALM's REST API.


The current implementation is essentially limited to importing manual test specifications, their steps and their attachments.

## Features and Limitations

Supported Features	Unsupported
<ul style="list-style-type: none"><li>import Test case specification from HP ALM's "Test Plan"<ul style="list-style-type: none"><li>tests without parameters</li><li>tests without called steps</li><li>tests that are not marked as "templates"</li><li>tests of type "MANUAL"</li></ul></li><li>import Test attachments and Test step-level attachments</li><li>import formatted Test description</li></ul>	<ul style="list-style-type: none"><li>tests whose type is not "MANUAL"</li><li>tests with parameters</li><li>tests with called steps</li><li>tests that marked as being "templates"</li><li>defects and requirements</li><li>links to defects/requirements</li><li>hierarchical organization information</li><li>test runs</li><li>Test Lab-related information (tests, runs, etc.)</li></ul>

 **Please note**

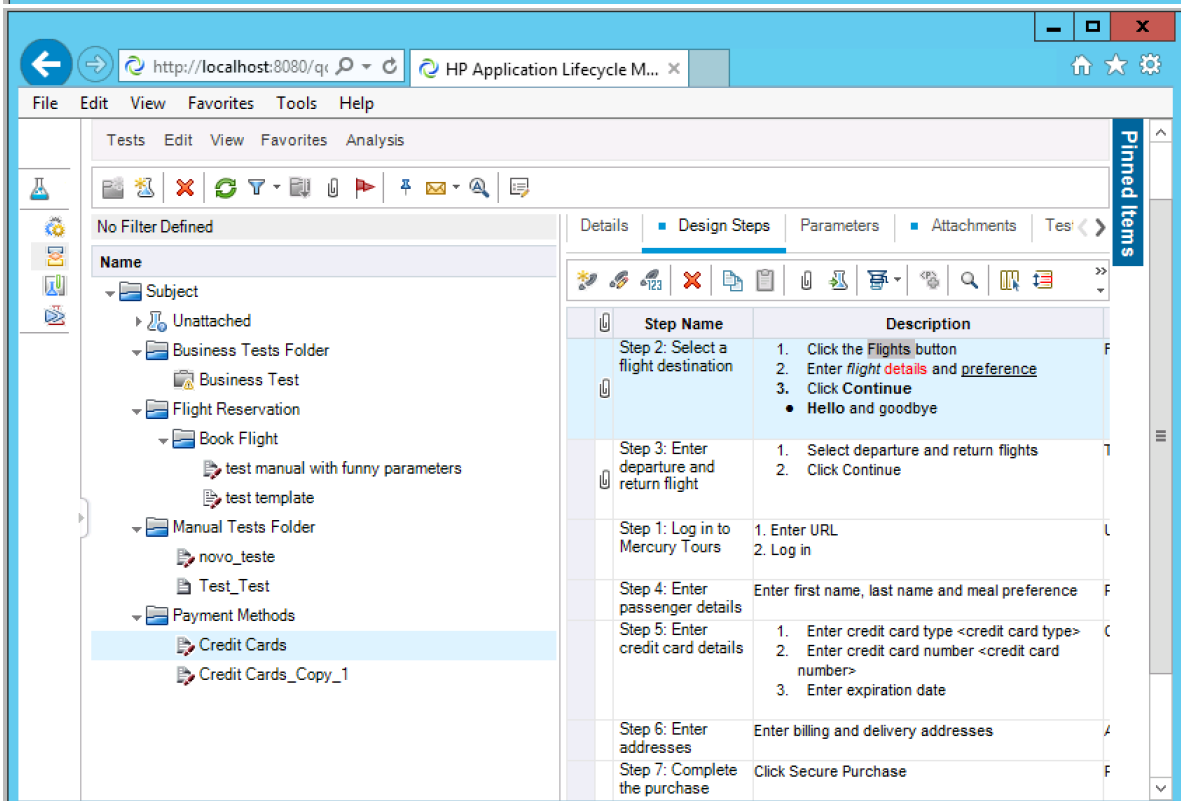
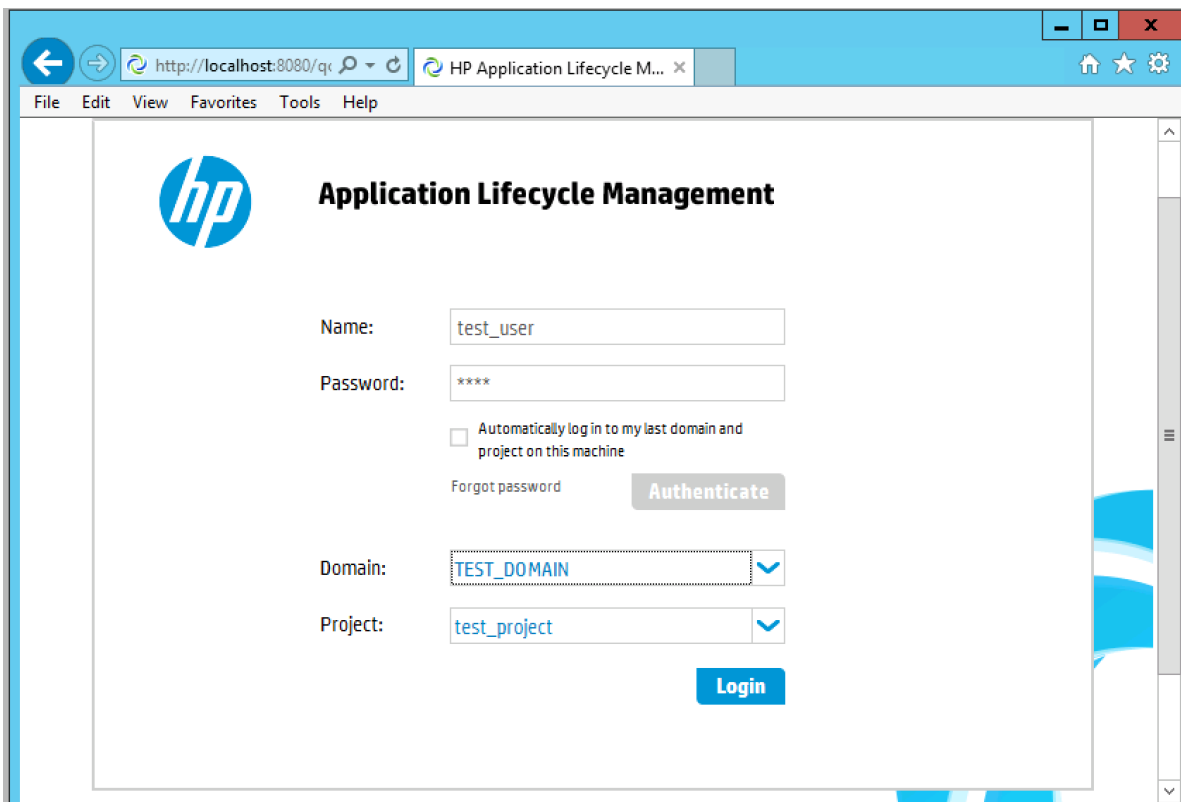
The current importer is relatively basic. If you need to migrate more information and have further control over the migrated data, we recommend you contact an Atlassian partner with expertise on this kind of migrations. Note that migrating "all" information may be a complex process to implement and some things may not be mappable at all.

 **Please note**

- The steps information from HP ALM/QC is saved in HTML which is only convertible to Jira's wiki markup from Jira 7.2 and later. In Jira version below 7.2, the steps are shown with HTML markup.
- In order to import Tests, the Test issues cannot have required fields in Jira; you must set them as optional before starting the import process.

## How to use

Suppose you have a project in HP ALM (see above for supported version/s) and you wish to import the tests from HP ALM's "Test Plan", as seen below:



To start the importation process:

1. Log in with an administrator account.
2. Go to System>Import and Export>External System Import.
3. Select Xray's **HP ALM/QC Importer**.

JIRA

Dashboards ▾

Projects ▾

Issues ▾

Boards ▾

Structure ▾

easyBI

Tests ▾

Create

Administration

Search JIRA admin

ApplicationsProjectsIssuesAdd-onsUser managementSystemStructure

General configuration

Find more admin tools

TRUBLESHOOTING AND SUPPORT

System info

Instrumentation

Database monitoring

Integrity checker

Logging and profiling

Scheduler details

Support Tools

Audit Log

SECURITY

Project roles

JIRA import wizard

To get started, click the product you want to import your projects from.

Xray

Test Case Importer

Xray

HP QC/ALM Importer

CSV

Microsoft® Excel®

Bitbucket

GitHub

a:

Asana

Trello

Microsoft® TFS®

Then, you need to fill out the details of the HP ALM/QC instance, including its host name/IP, port, domain, project and authentication credentials.

HP QC/ALM Importer Setup

HP QC/ALM Details

Configuration

Project

Confirmation

HP QC/ALM Details

ALM Version12.5x

Hostqc.example.com|

Port8080

DomainTEST\_DOMAIN

Projecttest\_project

Username test\_user

Password \*\*\*\*

Note: only standard manual tests will be imported (i.e. non template tests and without parameters).

Note: only HP QC/ALM v12.5x is supported.

Next

Back



### Please note

When you click Next, the connection is validated. If the connection fails, an error message is shown and you won't be able to proceed with the importation process.



Failed to connect to HP QC/ALM.

Upon successful connection, you can optionally define a label to assign to the Test issues that will be created. This may be quite useful if you need a quick way to identify the newly created issues. The label syntax is restricted in the same way as the label fields in Jira. We recommend using a unique label with numbers.

## Configuration

HP QC/ALM  
Details

Configuration

Project

Confirmation

### Configuration

A label can be associated to issues created while importing HP QC/ALM. For that, fill the next text field.

Label

iteration1

Next

Back

Then, you need to choose the project in which you want the Test issues to be created.

## Map projects

HP QC/ALM  
Details

Configuration

Project

Confirmation

### Project

Select the HP QC/ALM Importer projects to import, then set how you would like these converted to projects in JIRA.

HP QC/ALM Importer Project

JIRA Project

project



Calculator

Next

Back

A final confirmation dialog presents information about the total number of Tests that will be imported.

This number may be lower than the actual number of Test issues that will be created; this occurs because Xray will only be able to import some of the tests, depending on their characteristics which can only be determined during the actual importation.

Confirmation

HP QC/ALM  
Details

Configuration

Project

Confirmation

Confirmation

We found 7 potential tests in project test\_project in domain TEST\_DOMAIN. Do you want to migrate the compatible ones?

Begin Import

Back

At the end, a brief summary is shown mentioning the total number of Test issues created and any warnings that occurred during the process.

✓

3 tests were imported successfully!

⚠

Import completed with 1 warnings:

•

HP QC/ALM Test with id 16 has Description blank.

What now?

You can download a detailed log [here](#).

View recently created [Issues](#).

[Import another project.](#)

From this screen, you can also see the list of created issues based on the label you provided. You can also consult the detailed logs about the process.

☰

JIRA

Dashboards

Projects

Issues

Boards

Structure

easyBI

Tests

Create

>>

Search

Save as

✓ labels=iteration1

1-3 of 3

T	Key	Summary	P	Status	Created
	CALC-1559	novo_teste		NEW	25/Oct/17
	CALC-1558	Credit Cards		NEW	25/Oct/17
	CALC-1557	Test_Test		NEW	25/Oct/17

1-3 of 3