

1.5.0 Release Notes

The Xray team is proud to announce **Xray Exploratory App** for Windows, Mac, and Linux version **1.5.0**.

Do you need to create sub-test executions? Do you have many mandatory Jira issue fields to show or hide? Do you need to add epic links to new issues? Well, now you can do all that. So, what's new?



New installation requirements

Note that since version **1.4.0**, the Exploratory App **requires Jira Server and Data Center version 8.4.0 or higher**.

Release highlights

- Added support to create sub-test executions on Xray for Jira. You can select the Requirement that you like as a parent issue for the sub-test execution.

Xray Exploratory App • Jira: xpand-rd.atla...

Test

Timeline

Project*

CALC - CALC

Summary*

Issue Summary

Test Type

Generic

Charter (Test Definition)

AaB I ... A ... +

Describe your test charter, including its mission and areas/features to be tested. A possible format could be:

Explore <area, feature, risk>

with/using <resources, restrictions, heuristics, dependencies>

to discover <information>

Test Execution*

Ad-hoc Test Execution for XFT-37 - I like the labels

☒ Create Sub Test Execution

Preconditions

Add precondition

Requirements

Add Requirement

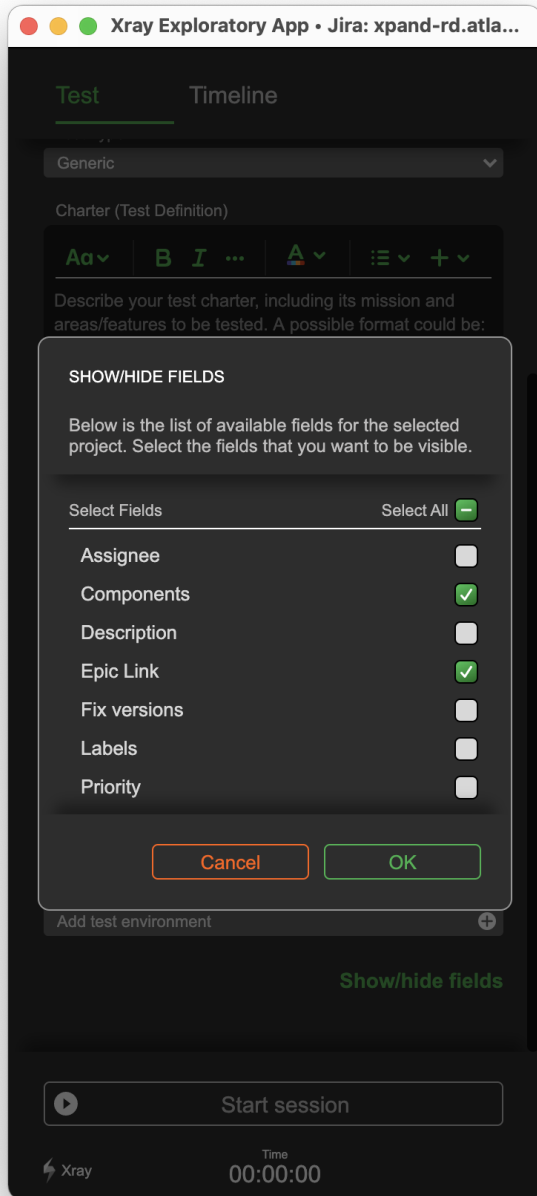
XFT-37 - I like the labels

Start session

Xray

Time
00:00:00

- Select the fields you need to create new tests, defects, or any other supported issue type on Jira.



- Support for Epic links on new issue creation. Search Jira for an Epic and link it to any issue.
- Fixed multiple bugs, improved stability and overall performance of the app.